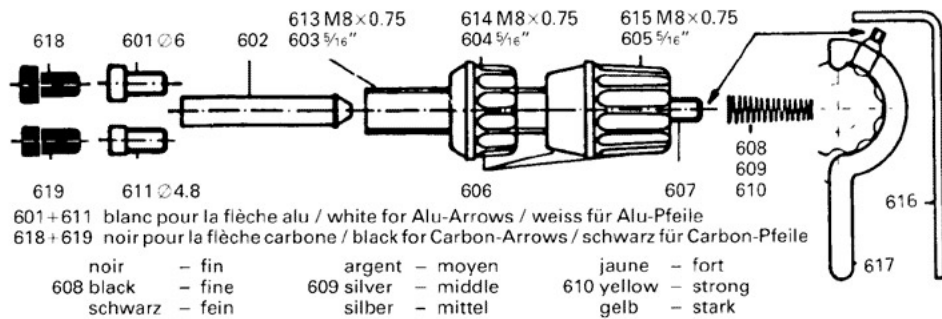
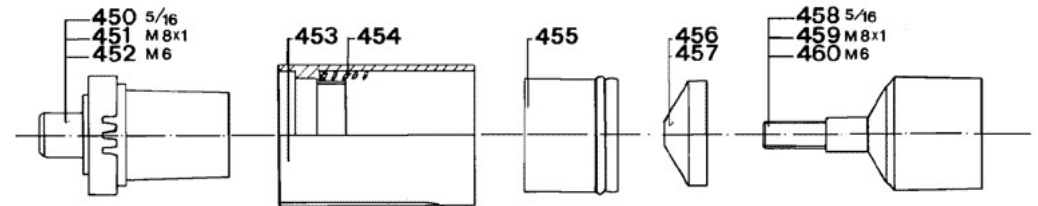


# AGF-Plunger Button



- AGF- 601 Large teflon tip  $\varnothing 6$
- AGF- 602 Stainless steel stem
- AGF- 603 Stainless steel barrel with teflon bushing 5/16"
- AGF- 604 Nut 5/16"
- AGF- 605 Knob, knurled knob 5/16"
- AGF- 606 Screw M3
- AGF- 607 Screw M4
- AGF- 608 Tapered spring black, fine
- AGF- 609 Tapered spring silver, middle
- AGF- 610 Tapered spring yellow, strong
- AGF- 611 Small teflon tip  $\varnothing 4.8$
- AGF- 613 Stainless steel barrel with teflon bushing M8x0.75
- AGF- 614 Nut M8x0.75
- AGF- 615 Knob, knurled knob M8x0.75
- AGF- 616 Allen key 1.5
- AGF- 617 Wrench 2.0 for AGF-607
- AGF- 618 Large carbon tip  $\varnothing 6$
- AGF- 619 small carbon tip  $\varnothing 4.8$

# AGF-TFC



- AGF- 450 Upper insert with stud 5/16"
- AGF- 451 Upper insert with stud M8x1
- AGF- 452 Upper insert with stud M6
- AGF- 453 Main torque tube
- AGF- 454 Spring
- AGF- 455 Sliding tube
- AGF- 456 Rubber disk red, standard
- AGF- 457 Rubber disk black, extra strong
- AGF- 458 Inner bolt with thread 5/16"
- AGF- 459 Inner bolt with thread M8x1
- AGF- 460 Inner bolt with thread M6